

PARENT INFORMATION BOOKLET

A-Z



8-20 Somerville Road HORNSBY HEIGHTS NSW 2077

Phone: 02 9476 5133

Email: hornsbysp.school@det.nsw.edu.au

Web: hornsbysp.schools.nsw.edu.au

Welcome

Dear Families,

I would like to acknowledge that we are proudly learning on Darug and GuriNgai land by sharing an Acknowledgement of Country written by one of our Year 4 classes.

ACKNOWLEDGEMENT OF COUNTRY

We respectfully acknowledge the traditional custodians of the land where our school now stands - the Darug Peoples to the west and the GuriNgai Peoples to the east.

We pay our respects to elders past and present and to any Aboriginal people in our community today.

We acknowledge that Aboriginal people have a special connection to this land and we are grateful that they treated it with respect for thousands of years.

We are grateful that we are able to learn and play on school grounds that are surrounded by native bushland, beautiful flowers and plants.

We promise to continue to look after our school's natural environment to make sure that it survives for many generations to come.

It is hoped that this information document will help you with any questions you have about Hornsby Heights Public School. Further questions about the school can be directed to the office staff who are happy to assist. Your child's classroom teacher will be able to answer any queries regarding your child's education.

We hope that you too, will find Hornsby Heights PS a welcoming and caring school and we look forward to working in partnership with you to continuously improve student learning outcomes.



Katrin Cornell
PRINCIPAL



Our Vision

At Hornsby Heights Public School we are a community of learners. We care about the whole child and the group of people who support that child.

Our aim is to ensure that Hornsby Heights Public School is a nurturing and supportive environment that promotes a love of life-long learning.

By catering for the academic, social and emotional needs of students we guide each learner to reach their potential and connect and thrive in the world around them.

Our innovative mindset, reflective nature and collaborative efforts ensure we continuously aim high so that our learners are successful.

School Information

Office Hours: 8:30am – 3:30pm
Office: Somerville Road, Hornsby Heights NSW 2077
Phone: 9476 5133
Email: hornsbyhts-p.school@det.nsw.edu.au
Website: www.hornsbyhts-p.schools.nsw.edu.au

EXECUTIVE STAFF

Principal
Katrin Cornell

Assistant Principals
Deborah Dunn
Laura Rosier
Bronwyn Eudale
Sophie Croan
Cheryl Baker (relieving)
Nicole Tudor (APCI)

Librarian
Monica Demlakian

ADMINISTRATION STAFF

School Administrative Manager
Carla Johnson

School Administrative Officers
Jane Gaut
Janelle Ayres

School Counsellor
Anne Thomas

DEPARTMENT OF EDUCATION & COMMUNITIES

Mooney Mooney Principals Network
Telephone: 4348 9100
Director, Educational Leadership
Adam Boulus

Quick links:



Communication



Curriculum



Enrichment



Finance



Health and welfare



Learning opportunities



Parent involvement



Technology



Transport



Uniform



Visible Learning

A

Accidents and Sudden Illness	20
Anaphylaxis	20
Assemblies	13
Asthma & Other Chronic Illnesses	20
Attendance	16

B

Banking	22
Buddies	23
Bus Information	38

C

Canteen	16
Changes to Routine	16
Clothing/Personal Belongings	16
Curriculum	18
Creative Arts	30

D, E

Departure	16
Excursions	16
Emergency Evacuation	16
English as an Additional Language or Dialect (EAL/D)	16

F, G, H, I

Family Court	16
Family Holidays	24
General Information	4
Home/School Communication	18
Homework	24
Houses	17
ICT Integration	36
Immunisation	20
Infections and Contagious Illnesses	21

L

Learning Support Team	15
Leaving School Grounds during school hours	24
Library	25
Lines	25

M, N

Maths Olympiad	26
Medications at school	21
No Hat Play in Shade Rule	40

O, P

Organisation	22
Outside School Hours Care	28
Opportunity Classes	38
Parent Organisations	28
Parents as Helpers	28
Pedestrian Crossing Supervisor	32
Performing Arts	31
Playgrounds	22
Playmates and Buddies	23
Positive Behaviour for Engaging Learning	19

R

Religious Instruction/Ethics	34
Reporting to Parents	18
Road Safety	38

S

School Accounts	22
School Hours	13
School Strategic Directions	8
School Song	44
School Map	10
Selective High School Tests	29
'Short Stay' Pick Up Zone	12
Speech Therapists	33
Special Programs	15
Sport	32
Student Representative Council	37
Swimming School	33

T, U, V

Travel To and From School	38
Uniform	40
Visible Learning	35
Visiting Performances	34
Visitor Identification	35

SCHOOL IMPROVEMENT PLAN

Strategic Directions

STRATEGIC DIRECTION **ONE**

Student Growth and Attainment

PURPOSE:

In order to build strong foundations for academic success and progress in reading and numeracy, we will further develop and refine data driven teaching practices that are responsive to the learning needs of individual students.

STRATEGIC DIRECTION **TWO**

Connected and Supported

PURPOSE:

In order to ensure that all 435 students are known, valued and cared for, we will support learners through a whole school approach to wellbeing practices that encompass positive relationships across the school community.

STRATEGIC DIRECTION **THREE**

Innovative and Collaborative Practices

PURPOSE:

To build collaborative teaching and learning practices that support a community of learners who take on an innovative mindset and connect to the world around them.

School Context

Hornsby Heights Public School is a medium sized school situated in a bushland setting, north of Hornsby. The student population is currently 455 students with 19 classes. Students that have English as an Additional Language/Dialect (EAL/D) at the school is 19%. We have 1% of our students who identify as Aboriginal. We work with the Aboriginal Education Consultative Group as the peak community advisory body to the department on Aboriginal education.

The school culture is that of innovation and equipping students to be future ready learners whereby the school takes on a Project Based Learning and Inquiry focus approach to subjects other than English and Numeracy. We have a strong

focus and high expectations in the area of Literacy and Numeracy.

A wireless network is located across the school, meaning that students in all classrooms can access the internet and utilise tablet technologies. Connect to Learn (Bring Your Own Device) is offered in Stage 3 and Laptops (3-6) and iPads (K-4) are utilised across all 18 classes.

The school operates a specialist Physical Education and Dance program as well as a range of extra-curricular activities including three bands, a choir and a 3-6 Dance Ensemble. We have formed a music partnership with Jim Jam Music in Semester 2. Students across 3-6 take part in the Hornsby Zone Primary School Sporting Association and engage in

GALA days arranged across the local schools. All Year 6 students take part in a rigorous debating program and a whole school Multicultural Public Speaking Competition is held across K-6 each year. We utilise literacy and numeracy support funding to employ a learning support teacher to implement small group programs catering to the needs of our students. As a Positive Behaviour for Engaging Learning School the expectation of being a Respectful, Responsible learner that aims for Personal Best underpins the collective vision of all within our community.

All students make use of the Eco-Garden which has a strong connection with bringing the parent body into the school. We use their expertise in teaching students about how to look

after a garden and its produce and how to create healthy meals that are shared together as a community. The school has a chicken coop which allows the students to experience what it is like to care and look after animals. The school is part of the Network for Environmental and Suitability Teachers (NEST) where we work with other schools in the area of sustainability.

Hornsby Heights Public School parent community have high expectations of the school. The P&C generously funds many projects and is a valued partner in ensuring that each child's experience at the school is a positive and rewarding one. Through its various sub-committees, the P&C makes significant contributions to our school.



School Map

A Block - Administration Office

- 1 Principal
- 2 AP/Collaborative space
- 3 Counsellor
- 4 Learning Support
- 5 Strong room
- 6 Foyer
- 7 Sick bay
- 8 SAM
- 9 Courtyard garden
- 10 Staff common room
- 11 Maths storeroom
- 12 Cleaner
- 13 Sports storeroom

B Block

- 14 Dance store
- 15 Craft
- 16 Support

C Block

- 17 GA storeroom
- 18 Canteen

D Block - Library

- 19 Uniform shop

F Block

- 20 Mower shed



 First Aid Kits
including EpiPens®

 Defibrillator

 Kitchen

ACCESS TO SCHOOL GROUNDS

There are **two** pedestrian access points to the school - Pike Road and Somerville Road. Due to limited parking in these streets, parents collecting children in cars are encouraged to use the nearest access point and escort children back to their car. Please do not park in any driveways or car parks. Car parks are not for pedestrian use. An authorised car park is located near the school hall.

'SHORT STAY' PICK UP ZONE

The school has a 'Short Stay' zone that has been set up outside the school on Somerville Road. This is an area where you can collect your child from in the

afternoon without getting out of your car. Students line up with the Principal or an Assistant Principal at the front gate. Cars are to line up in the "Short Stay" zone and display a large neatly written and clear name shield of your child in the passenger side window.

Your child/ren's names will be called out on a microphone and they will then get themselves into the car. Please do not get out of the car and make sure you move up the line as each car moves on. If there is no space in the "Short Stay" zone, you will need to either move up to the 15 minute parking section or go around the block and then return to the line. If your child is unable to get themselves into the car, without you getting out, then you will have to park your car elsewhere and pick up your child by foot. If you are in the line and you do not have a name shield, you will be asked to park and collect your child.

This system was set up to be smooth and quick and we require your assistance to ensure it stays that way so that we do not block other drivers or create dangerous situations for others.

AFTERNOON DISMISSAL

Kindergarten, Year 1 and Year 2 children who are not collected on time will be taken to the Office. Any Year 3 to 6 students who are not collected on time, should go to the Office. Executive staff will contact the parent/emergency contact. Please advise your child's class teacher if there is to be a change in the method of departure from school.

ASSEMBLIES

Assemblies are held on Thursday afternoons from 2:30pm. K-2 assemblies are held on odd weeks each term (Weeks 1, 3, 5, 7, 9 and 11) and 3-6 assemblies are held on even weeks each term (Weeks 2, 4, 6, 8 and 10).

Assemblies are an opportunity to foster school spirit, to convey information and publicly acknowledge those students who have followed our school values.

Bell times

Classes begin

9:10am

Recess

11:10am to 11:55am

Lunch

1:40pm to 2:00pm

Classes end

3:10pm

The playground is NOT supervised before 8:40am or after 3:10pm. Students are NOT to arrive before 8:40am.



The NSW Australian Curriculum

KEY LEARNING AREAS

THE PRIMARY CURRICULUM IS MADE UP OF SIX KEY LEARNING AREAS (KLAs):

- English: including Reading & Viewing, Speaking & Listening and Writing & Representing.
- Mathematics: made up of working Mathematically in Measurement and Geometry, Number and Algebra and Statistics and Probability
- Creative Arts: Music, Visual Arts, Drama and Dance

- History/Geography
- Physical Education, Personal Development and Health
- Science and Technology

There is an overlap between many of the KLAs and the school recognises that it is in the students' best interest to integrate the various aspects of the curriculum so that they become inseparable parts of a meaningful and enjoyable primary education.



Learning Support Team

The role of the Learning Support Team is to provide for the learning needs and welfare of all students at Hornsby Heights Public School. The Learning Support Team meets weekly to discuss teacher and parent/carer referrals and to follow up on students referred during the year. The team discusses the referrals with a view to implementing one or more of the following strategies:

- assistance with developing Personalised Learning and Support Plans for students
- help implement programs to support students' needs
- organise for students to receive extra support from specialist staff within the school
- seek external help to support student and family

- refer to the School Counsellor
- apply for funding to support the student through the use of a teacher's aide (Student Learning Support Officer).

Special Programs

Programs are in place to ensure that students with special requirements are provided with the additional support that will enable them to reach their full potential. This includes children for whom English is an Additional Language Dialect (EAL/D), children with learning disabilities and high potential and gifted students.

Parents who are concerned about their child's progress or adjustment are encouraged to discuss their concerns with the class teacher, a member of the school executive or the school.



ATTENDANCE

Students are required to attend school on each day instruction is provided. It is the responsibility of parents/carers to ensure regular attendance. Attendance is essential to ensure progress.

Notification of a child's absence can be made via a letter or Seesaw notification to the class teacher. Please report student absences prior to 9:10am. The school is required to maintain daily records of attendance, including partial attendance and late arrival. Parents/carers must send a note explaining any absence or partial absence within seven days.

The Principal must be informed if the student is to be absent for an extended period of 10 school days or more. An application for Extended Leave must be completed in advance and must include travel documentation.

The Executive is responsible for monitoring student attendance and will inform parents/carers promptly of any case of concern or of any unexplained absences. If you experience trouble with getting your child to school, please come talk to us and we can set up a support system for you.

CHANGES TO ROUTINE

Teachers should be advised in writing of any change to a student's routine (eg. a change in after-school arrangements). This information must be given to the teacher before the change of routine so as to ensure the safety of the student. Messages telephoned to the school office will only be passed on in emergency situations.

CLOTHING/PERSONAL BELONGINGS

Please mark all clothing and personal belongings clearly with your child's full name: jumpers, jackets and hats, both shoes and socks and all removable clothing, drink bottles etc. Name labels can be ordered through the Uniform Shop or use a permanent clothing marker.

CANTEEN



The Canteen depends on parents for its day to day operation and is open for recess sales and lunch orders on Monday, Wednesday and Friday (subject to change depending on volunteers). Children are provided with price lists and lunch ordering procedures at the beginning of the school year. Items on the list are rated for healthy eating considerations. All pre-ordered food is done so on the P&C QKR ordering system.

DEPARTURE

The staff is conscious of the safety of our students when leaving school to go home. K-6 students who catch the bus, meet between the painted yellow seats on the lower playground. Teachers supervise them crossing the road at the zebra crossing and wait with them until they board the bus. Kindergarten students who attend the Hornsby Heights OOSH centre are collected outside their rooms. Years 1-6 students make their own way to the Centre. Students who remain after school for rehearsals, tuition or training are the responsibility of the person or group organising the activity - not the responsibility of the school unless it is an activity organised by the school. Children being picked up after school must be picked up promptly at 3:10pm. Students must be supervised by the parent/carer after 3:10pm and are not permitted to remain unsupervised to wait for an afternoon tutorial or lesson. Any student that is not picked up will be sent to the office and parents will be called.

EMERGENCY EVACUATIONS

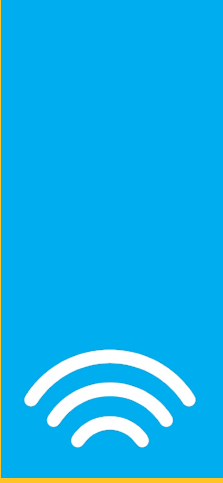


The school has an emergency evacuation procedure to deal with a variety of situations. The students and staff practise this procedure at regular intervals during the year. All visitors (including parents/carers) must comply with emergency procedures and instructions from staff in the event of an evacuation drill and any emergency.

Sports Houses

Children in Years K-6 are allocated to one of FOUR sporting houses:

Crosslands	Navy Blue
Galston	Red
Somerville	Gold
Wiseman	Bottle Green



Communication

PARENTS HAVE A NUMBER OF AVENUES TO CHOOSE FROM

HOME/SCHOOL COMMUNICATION

Our school policy is to ensure on-going communication between school and home. Changes or variations to procedures or routine are always well publicised. The school publishes a fortnightly newsletter, via Enews app & email.

COMMUNICATION

Effective communication between teachers and parents/carers is vital to ensure the best learning environment for each student. If, at any time, you would like to discuss an issue regarding your child's progress, please contact the school to arrange an interview with your child's teacher. If in doubt, always make the appointment. The school communicates with parents/carers through a variety of processes.

These include:

Whole School Communication

- Enews app (Notes and Newsletter)
- Newsletter (Fortnight Publication)
- School Website

P&C Communication

- P&C Meetings
- P&C Facebook Page

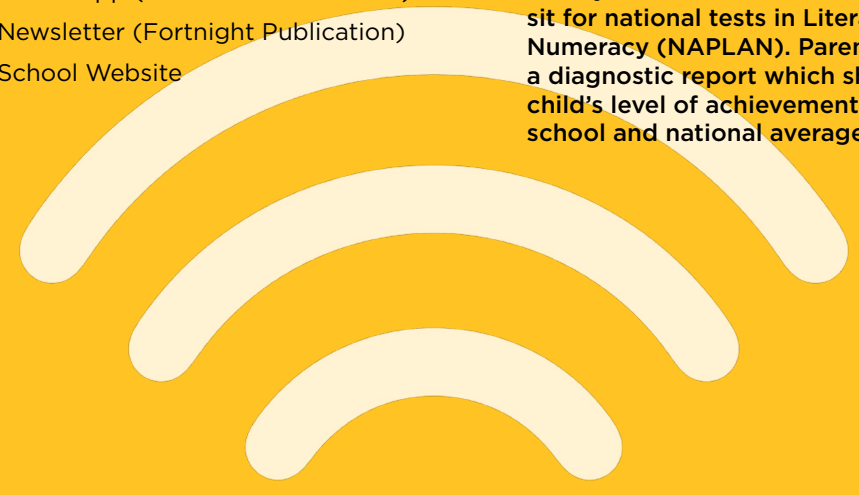
Classroom Communication:

- Seesaw
- Call the Office between 8:30am - 3:30pm
- Face to face with your class teacher
- Meet the Teacher Evenings at the start of each year
- Annual Parent/Teacher interviews

REPORTING TO PARENTS

Parents are provided with reports on their child's progress at the end of each semester. Reports are designed to indicate the student's level of mastery and degree of application and to provide parents with a profile of strengths and areas of improvement.

Each year students in Years 3 and 5 sit for national tests in Literacy and Numeracy (NAPLAN). Parents receive a diagnostic report which shows the child's level of achievement compared to school and national averages.



Wellbeing

POSITIVE BEHAVIOUR FOR ENGAGING LEARNING

PBEL is a school wide program that promotes a positive and encouraging learning environment where students know what is expected of them. They are taught the required skills in behaving responsibly and respectfully.

At Hornsby Heights Public School we believe that:

- Everyone has a right to learn in a safe and positive classroom environment.
- Students should be treated fairly and in a consistent manner.
- PBEL practices should be consistent throughout the school.
- Behaviours and actions have consequences that must be accepted by the students.
- All students can develop and use self-regulation strategies.
- Parental support and cooperation are necessary to run a successful positive student behaviour program.

All staff are responsible for teaching the behavioural expectations, providing consistent positive feedback to students, and delivering consistent corrective feedback and consequences when expectations are not followed. The entire school, including the classrooms, playgrounds, canteen, school gates and buses, is considered part of the total learning environment.

The systems at HHPS have been designed to support our learning and teaching environment and to provide individual behaviour supports to achieve positive academic and social outcomes for all students. Our mascot, Spirit the Cockatoo, was chosen from hundreds of entries in our 'design a mascot' competition, helps us to keep on track.





Health

STUDENT HEALTH AND WELFARE

ACCIDENTS AND SUDDEN ILLNESS

In the case of a sudden illness or an accident, every attempt will be made to contact the parents or an emergency contact person. If this is not possible or the emergency is extreme, appropriate medical treatment will be sought.

Please inform the office staff of any changes to your contact details, especially the emergency contact telephone numbers, for your child's Student Information Card.

School staff are trained in emergency response procedures.

ALLERGIES

Regulations require specific paperwork to be completed by your child's doctor if your child has anaphylaxis, asthma or allergies. The office staff will provide this paperwork that **MUST BE SIGNED BY A DOCTOR**. We appreciate your support in this matter.

ANAPHYLAXIS

On occasions people in the community have a severe and life threatening reaction to an ingested product. This is known as Anaphylaxis. Such reactions require use of an EpiPen in an emergency. For this reason we ask that no food products are shared at school. We do not share birthday cakes or lollies.

If you have a child with a life threatening allergy, which may require emergency intervention or the use of an EpiPen,

we ask that you make this known to us before the start of the school year. We will also require an Emergency Action Plan completed by your General Practitioner and any medication for use during an Anaphylactic reaction. School staff are trained in the care of anaphylactic students including the use of EpiPens.

The consumption of nuts and nut by-products are discouraged at our school.

ASTHMA & OTHER CHRONIC ILLNESSES

Some students require specific support in a health emergency such as an asthma attack. Please supply the school office with a Medical Action Plan, including a photograph of your child and all procedures and medication to be used if your child should require this intervention.

IMMUNISATION

When enrolling a child, parents/carers will be asked to provide an Immunisation History Statement. Parents can request an Immunisation

History Statement by contacting the Australian Immunisation Register on 1800 653 809.

A child without an Immunisation History Statement will not be prevented from enrolling in primary school. Under the NSW Public Health Act 2010, children without proof of immunisation may be asked by Public Health Officials to stay at home during an outbreak of vaccine preventable disease.

INFECTIONS AND CONTAGIOUS ILLNESSES

There are some childhood illnesses which may cause a child to be excluded from school. If your child has contracted one of these illnesses, please contact the school immediately so that we can keep you informed of relevant Health Department regulations. Illnesses include: whooping cough (pertussis), chickenpox, German measles (rubella), measles, mumps, viral hepatitis, ringworm, scabies, impetigo and conjunctivitis.

MEDICATIONS AT SCHOOL

Parents/carers of students with conditions that require regular medication must ensure that the school is aware of the student's condition. The school must be informed if medications are brought to school. All medications are to be handed in at the school office by an adult. No medications are to be kept in school bags or uniform pockets. Parents/carers should timetable medication dosages out of school hours if possible. However, if it is necessary for prescribed medication to be taken during school hours, parents/carers must complete a form giving permission for administration staff to supervise the administration of the medication. The form must include specific instructions. If your child has a diagnosed medical condition (anaphylaxis or asthma), a doctor's action plan must be provided to the school.





Finance

SCHOOL FEES AND MORE

SCHOOL ACCOUNTS

School Accounts are sent out at the beginning of each year, and include a Subject Fee for Curriculum and a Technology Subject Fee. These fees cover the workbooks and curriculum materials specifically designed by the school to supplement student learning. Excursions are billed to families as they arise.

Families may wish to make a voluntary contribution to the P&C to cover ground maintenance and support of

specific teaching and learning initiatives available at our school. There is also the opportunities to make a voluntary contribution to support our School Library.



Playmates & Buddies

TRANSITION TO 'BIG SCHOOL'

At Hornsby Heights Public School the transition to 'big school' is made easier with a buddy system and a program called 'Playmates'.

Each Kindergarten student is allocated a Year 6 buddy who support their Kindergarten student in the first few weeks of school by sitting with them at recess and lunch, playing with them in the playground and being a friendly smile in the school grounds.

PLAYMATES

'Playmates' is a PDHPE/Social Skills program designed to allow all new Kindergarten students to experience lunch breaks in a settled, organised and supervised manner for part of Term 1.

The program operated with the assistance of all Kindergarten and Year 6 staff members. Year 6 were trained to lead playground games that do not require playground equipment and were easy for Kindergarten students to play on their own during break times. Following the formal program, selected Year 6 students continued to support the students by setting up planned play situations in the K-2 play area in order to promote social interactions for the Kindergarten students.

Kindergarten and Year 6 classes come together throughout the year for planned opportunities to share some learning time together including buddy reading and classroom visits for special occasions.





ENGLISH AS AN ADDITION LANGUAGE OR DIALECT (EAL/D)

The school has specialist teachers who support the English language development of students, whose first language is not English. Students eligible for EAL/D support range from students newly arrived in Australia, who are beginning to learn English, to Australian-born students from a non-English speaking background (NESB). These students may require further development of their English language skills and on-going English language support. The EAL/D teacher works with class teachers and withdraws small groups of students who require intensive assistance.

EXCURSIONS

Excursions are an integral part of the school's curriculum and provide an enrichment of each student's educational program.

The school is aware of the imposition that excursions can make on a family budget and economic factors are taken into account in planning excursions. Ample notice is given of excursions which involve out of the ordinary expense.

FAMILY COURT

The school provides information to both parents/carers unless a contrary order from the Family Court or the police is provided to the school. Permission to participate in school excursions and activities is sought from the parent/carer with whom the student resides. Changes to existing arrangements can only be made following the presentation of a new order from the Family Court or police.

FAMILY HOLIDAYS

Only in extraordinary circumstances

should holidays be arranged during school terms. As directed by the Department of Education: 'As part of the implementation of the National Standards, holidays taken by students outside of school vacation periods will now be included as absences. A Certificate of Exemption can no longer be granted for this purpose.

HOMEWORK

The school community supports homework. Homework provides students with an opportunity to consolidate their classroom learning experiences and to develop essential home study skills. Homework is provided for every grade in the school in accordance with the school's Homework Policy. While homework is set on most occasions, there will be times when it is not set. This does not mean that there is no homework; reading, practising skills and completing unfinished work are activities that are always available.

LEAVING SCHOOL GROUNDS DURING SCHOOL HOURS

Students are not permitted to leave the school grounds during school hours unless they have parent/carer permission and are accompanied by an adult. Parents/carers wishing to take their children out of school during school hours must send a note to the class teacher before the event. Parents are requested to go to the front office to be given the early leavers form and take it to the classroom prior to collecting their child. This procedure ensures students' safety and avoids unnecessary disturbances to class routines. If an adult, other than the parent/carer, is to collect a student, the parents/carers must verify the identity of that person with the school before the student departs the school. Where possible, parents/carers are requested to avoid making medical and dental appointments during school hours, to assist with continuity of the learning program.



Maths Olympiad

ANOTHER LIGHT BULB MOMENT

The Maths Olympiad offers a range of mathematical competitions for students aged from around 8 to 14. The Maths Olympiad is a competition in which school teams compete against thousands of other teams throughout Australia and Asia in complex mathematical problem solving. Hornsby Heights Public School has a long history of competing in the Maths Olympiad.

There are five competitions spread over the year, each having five questions. Over the past few years, we have seen an increase in the mathematical

problem solving skills of our teams, resulting in higher accuracy in individuals and the team.

Our teams meet weekly, throughout lunch or as part of the school mathematics program to practise strategies for identifying and solving problems.

Often facilitated but the teacher and led by students, the training is a buzz of 'what-ifs', sharing of ideas and 'light-bulb' moments.



LIBRARY

The school has a well equipped library which is used by all students. The Library supports the literacy program through research skill development and a love of reading. There are inquiry terminals for students to use in their search for both recreational reading and for research. Each child should have a library bag. These can be purchased from the Uniform Shop.

LINES

As students are provided with important information at this time, it is essential that they arrive at school in time for 'lines'.

OPPORTUNITY CLASS

The Department of Education provides opportunity classes (OC) for academically gifted and talented students in Years 5 and 6. Students must compete academically with all other candidates for entry into an OC Class.

Academic merit is determined mainly by the combination of the results of the state-wide OC Placement Test in English, Mathematics and general ability, together with the school assessments of student performance in English and Mathematics.

Students entering Year 5 OC will usually be aged between 9 and 11 years on 31 January of the year they enter Year 5 and are usually in Year 4 when they apply for placement. Students must be Australian citizens or holders of a visa granting permanent residence in Australia. Parents/carers must be living in NSW at the beginning of the school year in which the student enters Year 5.

The schools sends out information regarding OC tests via the school newsletter or Enews.

PARENT ORGANISATIONS

The school has an active Parents and Citizens Association and a School Club.

The P&C Association meets the first



Parental Involvement

Wednesday of each month during school terms at 7:00pm in the school staff room.

The Eco Garden Committee meets on the third Wednesday of the month.

PLEASE NOTE: The HHPS P&C levies a contribution to assist with P&C activities.

PARENTS AS HELPERS AND EXPERTS

All volunteers are required to complete a "Working with Children Check" form (Appendix 5-Declaration for volunteers)

which is available at the school office.

Parents are valued as partners in the education process in this school.

Classes at all grade levels appreciate parent help with programs. Parents with and without special expertise are always welcome to help with learning programs especially Project Based Learning.

Eco Garden Team-Parents are welcome to assist students with garden care.

Please contact your child's class teacher if you are interested in helping.

PEDESTRIAN CROSSING SUPERVISOR

The Roads and Maritime Services (RMS) employ a crossing supervisor before and after school to assist with safety on the Somerville Road crossing. Parents/carers should support the crossing supervisor by following instructions and using the crossing according to the road rules. Comments regarding this service should be directed to the RMS.



Learning Opportunities

SEE OUR AMAZING CREATIVE ARTS PROGRAMS

DANCE ENSEMBLE

Dance Ensemble is a selective and creative group where 24 students from Years 3-6 are given the opportunity to express themselves through the movement of dance. The Dance Ensemble group rehearse weekly with three professional choreographers, to develop a technical and advanced routine that showcases a range of genres and styles. Each year the group performs at school events and the Sydney North Dance Festival.

K-6 DANCE PROGRAM

Our students participate in a weekly dance lesson with a qualified and passionate dance teachers for a term. Dances are showcased for the community.

JAPANESE ART EXCHANGE

The Nagoya Sister City Art Exchange is a program run by the Department of Education's Arts Unit. Artworks are submitted by NSW public school students

from Years K-12 for consideration to be included in an international art exchange.

Selected artworks are then transported overseas and exhibited in Nagoya, Japan along with works by students in Nagoya and other cities worldwide, including Los Angeles, Mexico City, Reims, Turim and Ninjing. Artworks from Nagoya are sent in reciprocation to the participating school.

The annual event encourages and demonstrates friendship and cultural exchange, which in turn promotes the further development of sister city relationships, strengthening our international community of learning.

Each year we submit four exceptional artworks into the event where we hope they are accepted into the exhibition, being sent and displayed in Japan.

ECO GARDEN AND CHICKENS

The Hornsby Heights Eco Garden Committee works with the school to ensure all students get to be part of our wonderful eco garden which involves planting, harvesting and cooking their grown produce each term.

PERFORMING ARTS

The school is justly proud of the participation of its students in the performing arts. Music and dance are important curriculum strands from Kindergarten to Year 6. Students are also offered the opportunity to participate in extra curricular programs that may change from year to year.

The school has several musical groups:including a choir and bands. All groups are provided with numerous opportunities to perform during the

course of the school year as well as participating in residential camps.

The school provides opportunities for students to take private lessons in woodwind and brass instruments and percussion.

PHOTO GALLERIES:

DANCE

BAND



PLAYGROUNDS

Our school has several playground areas, which are closely supervised by staff. The students are able to use school equipment during breaks and staff emphasise cooperative play. Games involving physical contact (eg tackling, pushing, kicking or throwing objects at others) are not permitted. For sun safety, students must wear their school hat outside. We have a “no hat, play in the shade” rule. Students without hats sit in the shade. All rubbish must be placed in garbage bins.

The Library is available as a playground alternative during the second half of lunch. The Games Room, located in the COLA by the hall, provides an area for targeted students to have a more structured play space supported by staff.

OUTSIDE SCHOOL HOURS CARE AND PRIMARY OOSH

A parent committee of HHPS conduct

a quality care program within the school grounds for children of primary school age at reasonable rates. Care is provided from 7:30am to 9:00am and from 3:10pm to 6:30pm. Vacation care programs are also offered from 7:30am to 6:30pm. Further information can be obtained by telephoning 9476 6901 or by visiting the school website www.hornsbyhts-p.schools@det.nsw.edu.au. The playground is not supervised before 8:40am and unless attending Outside School Hours Care students should not arrive at school before this time.

SELECTIVE HIGH SCHOOL TESTS

Students, towards the end of Year 5, have the opportunity to apply for placement in a Selective High School. Students must compete academically with all other candidates for entry to each selective or agricultural high school. Academic merit is determined mainly by the combination of the results of the Selective High Schools' Test in Reading, Writing, Mathematics

and General Ability together with the primary school assessments of students' performance in English and Mathematics. Additional information may also be provided by parents/carers or principals to support the application and will be considered at the discretion of the selection committee. Students must be Australian citizens or holders of a visa granting permanent residence in Australia.

For entry to Year 7 in any given year, the selection process will follow this timeline:

1. **October/November:** Online applications open
2. **March:** Students complete the test
3. **July:** Parents/carers are informed of outcome

More information on Selective High Schools can be obtained from: <https://education.nsw.gov.au/public-schools/selective-high-schools-andopportunity-classes/year-7>

SPEECH THERAPISTS

We have a speech therapist onsite at

our school, providing a successful and accessible service to working parents. Speech pathology services include support for expressive and receptive language, speech sound difficulties, stuttering/fluency and reading and writing skills.

SPORT

Kindergarten participate in a gross motor program designed to develop skills, flexibility and strength.

Years 1 and 2 participate in a whole stage sports/skills and games program.

Children in Years 3-6 participate in School Sport each Friday.

The school also participates in Hornsby Zone School Sports Association (HZSS) in T-Ball, Softball, Cricket, Soccer, AFL and League Tag. There are annual carnivals for swimming, athletics, and cross country. Successful participants have the opportunity to represent the

PHOTO GALLERY

FUN RUN



school at Zone, Area and State Carnivals and Area Round Robins in soccer and netball. Sports Clinics to improve skills are held in a variety of sports.

Students are given the opportunity to try out for Regional Teams in cricket, netball, tennis, basketball, AFL, rugby (league and union), softball and soccer.

SWIMMING SCHOOL

An intensive swimming school is conducted each year, for all students in Year 2 and for older children who need more lessons in swimming.

SPECIAL RELIGIOUS EDUCATION / SPECIAL EDUCATION IN ETHICS

Special Religious Education (SRE)

involves authorised representatives of approved religious persuasions providing instruction to students within school time. Parents/carers nominate their child's religious denomination on enrolment and they may withdraw them or change Scripture classes by notifying the office in writing. Students also have the option of attending Special Education in Ethics (SEE) classes as an alternative to Non-Scripture.

Each Tuesday visiting volunteers provide religious instruction to classes of Catholic, Protestant, and Islam students and Ethics as an option for children of parents who nominated for no scripture.

VISIBLE LEARNING

Our Visible Learning video showcases the ongoing Visible Learning journey at HHPS. It highlights the way in which our students take ownership of their learning, self-assess, set goals and use

our eight Learning Dispositions within James Nottingham's Learning Pit so they know what to do when they don't know what to do!

[LINK TO VIDEO](#)

VISITOR IDENTIFICATION

All visitors must sign in and out of the school at the office. This includes in-class helpers. Helpers are required to wear a visitor identification badge whilst on the school grounds. Lanyards are available from the school office.

VISITING PERFORMANCES

From time to time performers are invited to present shows at our school. Only those shows which are considered

to be of educational merit and present value for money are invited.



Technology

ICT INTEGRATION

All classrooms are equipped with interactive technological aids. ICT tools are integrated into general classroom activities. The school has an extensive mobile ICT fleet for student learning. We also have video conferencing capabilities, interactive white board and computer animation equipment in the library.

BRING YOUR OWN DEVICE (BYOD)

A Connect2Learn (BYOD) program operates in Years 5 & 6.

CODING

Activities like the Spheros and Bea-Bots teach students computational thinking, which is the idea that it's OK to make mistakes. You just need to write a different code or script for the computer to follow.

STEAM

Science, Technology, Engineering, Arts and Mathematics. The department has invested in a series of STEM share kits that include robotics, 3D printers, virtual reality and film making.

Leadership

STUDENT REPRESENTATIVE COUNCIL

An important part of developing students respect and responsibility is the opportunity to be part of the student collaborative voice through the Student Representative Council. The SRC consists of two representatives from each class, Years K to 6, with class representatives being appointed at the beginning of each year.

The SRC meets fortnightly. They organise fund raising events for charities decided on by the student body and discuss issues students would like to know more about or be involved in.



Transport

STUDENT SAFETY IS KEY

TRAVEL TO AND FROM SCHOOL

The safety and the behaviour of children as they travel to and from school is of major importance to the school even though children may be outside the direct supervision of their teachers. All children whether they walk, ride a bike or travel by bus, are expected to behave in a safe manner that reflects positively on the school. In the interests of their own safety it is important that children proceed directly to their destination, without loitering, both before and after school.

All students riding bikes or scooters to school are required to wear a helmet to and from school.

ROAD SAFETY

Parents/carers should constantly reinforce and model road safety with their child. Unfortunately, some parents/carers break the road rules for their own convenience and these actions put our students at risk and make it harder

for the staff to educate our students effectively. Please support the staff and ensure the safety of our students by demonstrating the correct use of the road rules. Specifically, parents/carers are requested to ensure that their children know how to follow road rules.

BUSES

Transdev run school buses for the length of Somerville Road and along Galston Road as far as Hornsby Station. OPAL cards are provided free of charge to all students in Years K-2 who require them. All other children can obtain an OPAL card if they live more than 2.2km walking distance from the school. Otherwise they must pay. Further details can be obtained from the school office or from the bus company, Transdev.

The telephone number for general bus enquiries is 8700 0555. For timetable enquiries phone 131 500.

Opal card application forms are available from the school office foyer or apply online:
<https://www.service.nsw.gov.au/transaction/apply-school-opal-card>

SCHOOL BUS TIMETABLE

The Transdev bus timetable below is subject to change without notice. Please telephone Transdev on 131500 or visit their website atransdevnsw.com.au for confirmation of bus arrival and departure times.

Bus No	Time	Route (L=bus turn left, R=right turn)
Mornings		
596	8:20am	From Blackash Pl via Somerville to School (arrives 8.31am)
596	8:35am	From McKay Road via (R) Montview (L) Galston to cnr Somerville (arrives 8:37am)
596	8:36am	From Hornsby Interchange (Stand C) via Somerville to School (arrives 8:50am)
596	8:57am	From Blackash via Somerville to School (arrives 9:05am)
Afternoons		
9036	3:25pm	All stops to Blackash (arr. 3.35pm) return via Somerville (L) Galston (R) Hwy to Hornsby Interchange (arr. 3.50pm)
9033 (Except Tues)	3:25pm	From Cnr Galston & Sydney All stops to McKay Rd. (On Tuesdays catch route 596 at 3.33 from cnr Galston & Sydney to McKay Rd)
596	3:42pm	All stops to Blackash Pl



Uniform

THE SCHOOL UNIFORM IS WORN WITH PRIDE

The school community has elected to make the wearing of a school uniform compulsory. Whilst outdoors, summer or winter, both boys and girls are required to wear the school uniform hat. Uniforms need to be purchased through the Uniform shop or by using the online QKR ordering system. Please do not buy uniforms from other places as these are not our uniforms. Students with long hair are asked to use neutral coloured elastics such as black, white, green, yellow or skin colour and may use yellow or green ribbons, hair ties or clips in their hair. Students may wear hair accessories the colour of their house sport when at sporting events.

Extras: Raincoat or umbrellas for Years 3-6. K-2 students are discouraged from using umbrellas for safety reasons. Raincoats are preferred.

Earrings: Studs or sleepers only.

UNIFORM SHOP

Through the P&C Committee the school operates a Uniform Shop which carries the complete range of new and second hand uniforms including sports uniforms and winter fleecy tracksuits. Also available are school backpacks, library bags, hats, socks and sunglasses.

The uniform shop is currently open on Friday mornings from approximately

8:30 am to 9:15 am in weeks 1 and 2, 5 and 6, 9 and 10 of each term. This is subject to change.

The Uniform Shop can be contacted via email on hhpsuniforms@gmail.com

School uniform items are listed on the following page. We also have a green school bag available.

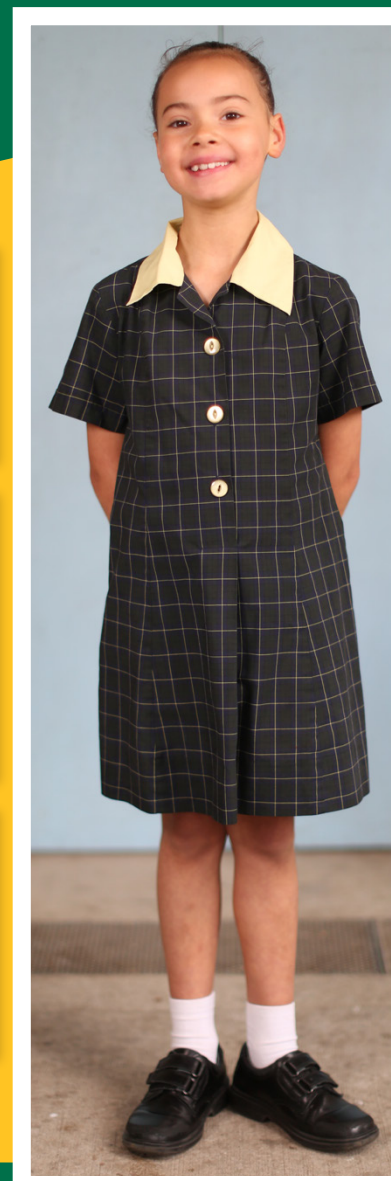
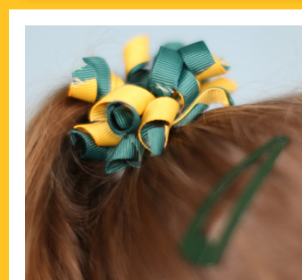
NO HAT PLAY IN THE SHADE RULE

In line with the Cancer Council policy the school has a no hat play in the shade rule.



Summer Uniform

HORNSBY HEIGHTS PUBLIC SCHOOL



Girls

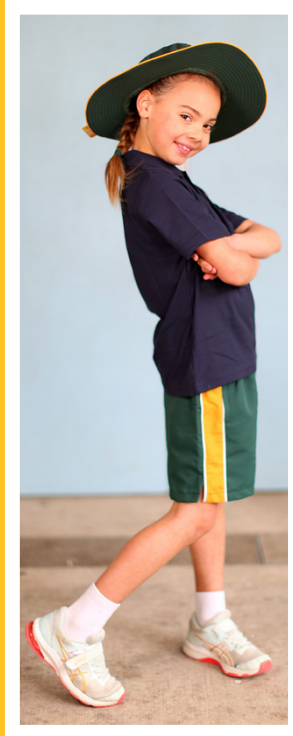
- Bottle green/navy/yellow plaid check dress
- Bottle green culottes and gold polo shirt
- Bottle green jacket, sloppy joe or jumper
- White short socks (socks must be visible)
- Black school shoes

Boys

- Gold short sleeve polo shirt
- Grey shorts
- Grey short socks with green/gold band
- Bottle green jacket, sloppy joe or jumper
- Black school shoes

Winter Uniform

HORNSBY HEIGHTS PUBLIC SCHOOL



Girls

- Bottle green/navy/gold plaid tunic with long sleeved gold polo shirt
- Green bootleg pants with gold long sleeve polo shirt
- Bottle green jacket with school emblem
- White socks or bottle green tights
- Black school shoes

Boys

- Long sleeved gold polo shirt
- Grey gabardine long pants
- Bottle green jacket, sloppy joe or jumper
- Grey short socks with green/gold band
- Black school shoes

Girls

- Bottle green shorts
- Polo shirt in house colour
- Sports shoes and white socks
- Green track pants (in winter)

Boys

- Bottle green shorts
- Polo shirt in house colour
- Sports shoes and white socks
- Green track pants (in winter)

A young girl with brown hair, wearing a dark green plaid school uniform with a yellow shirt underneath, is playing a gold saxophone. She is looking down at the instrument with a focused expression. The background is blurred, showing other students in similar uniforms.

HORNSBY HEIGHTS PUBLIC SCHOOL

School Song

*Explore a world beyond the trees,
Like a bird I'm flying free.
From up high I can see,
Everything, a part of me.
Something magic, something real,
Learning how it makes me feel.
Feeling pride in all I do,
Journey has begun.*

*Aim High! Spirit fly,
Green and gold, we'll always try.
Aim High! Spirit fly,
Hornsby Heights, reach the sky!*

*We are one, a family,
Grow together through the years.
Silent trust, believe in us,
We will do our best.*

*Aim High! Spirit fly,
Green and gold, we'll always try.
Aim High! Spirit fly,
Hornsby Heights, reach the sky!*

NOTE:

We sing our school song, with pride, at all assemblies.

We also sign the school song, using AUSLAN, as we sing.